

Sage Enterprise Management Integration

sage ISV Rockstar



Developed by WLM Software

Redefine Your Productivity with Greater Flexibility

Sage Enterprise Management (formerly Sage X3) enables enterprise class business management that reduces costs and complexity, while adapting quickly to unique company requirements. Built-in functionality for multi-company accounting and reporting, multi-site and global operations in process manufacturing, general manufacturing, business services and international trade presents a faster, simpler, more flexible approach to transforming your business.

Efficiency At Every Level – Accelerate core business processes - from purchasing to manufacturing, inventory, sales, customer service and financial management – within one cohesive business management solution

Visibility Across The Business – Make more informed decisions by always knowing what each part of the business is doing

Agility To Act (And React) – Get a system that supports the maze of global laws and restrictions in order to simplify compliance across currencies, regions and regulations

Choice Beyond The Cloud – Work the way your business works best: public, private, hybrid cloud or on-premise

Designed For Growth

360° View – Connect to your entire operation by a single, integrated solution and gain greater visibility to share information and communicate with ease

Freedom Of Choice – Keep your total cost of ownership as low as possible with a flexible solution that allows you to select the best edition, modules, deployment method and payment options

Growth – Add and adopt greater functionality as your business grows with our choice of modules, deployment methods and editions

Sage Enterprise Management Integration

Omnichannel Retail with iVend Retail and Sage Enterprise Management

Designed for midsize to enterprise retail businesses, iVend Retail management suite integrated with Sage Enterprise Management helps retailers gain Omnichannel capabilities with ease. The seamless integration between iVend Retail and Sage Enterprise Management provides end-to-end retail management with minimal manual intervention and streamlines retail functionality. Retailers can deliver a great shopping experience with an enterprise ready Omnichannel solution that is mobile, digital and global.

Seamless Integrations with iVend Retail and Sage Enterprise Management

iVend Retail integrates with Sage Enterprise Management via Open APIs allowing for centralized accounting while extending top of the line retail functionality to the entire business. Sage Enterprise Management is installed at the head-office and can be configured to connect to on-premise or on-cloud deployment of iVend Retail. Retail store operations are connected to iVend Enterprise – the central Head Office component of iVend Retail using internet or WAN connections. Fail safe replication allows store to continue trading even when the connection to the head-office is unavailable.

Tangible Business Benefits for Retailers



Maximize sales potential by implementing fully integrated sales growth programs across all sales channels



Gain a better focus on your business through easy to use and contextual dashboards and management information



Easily achieve sales objectives with a lower stock to sales ratio and focus inventory where it is most needed



Boost sales with promotional management functionality and customer loyalty programs

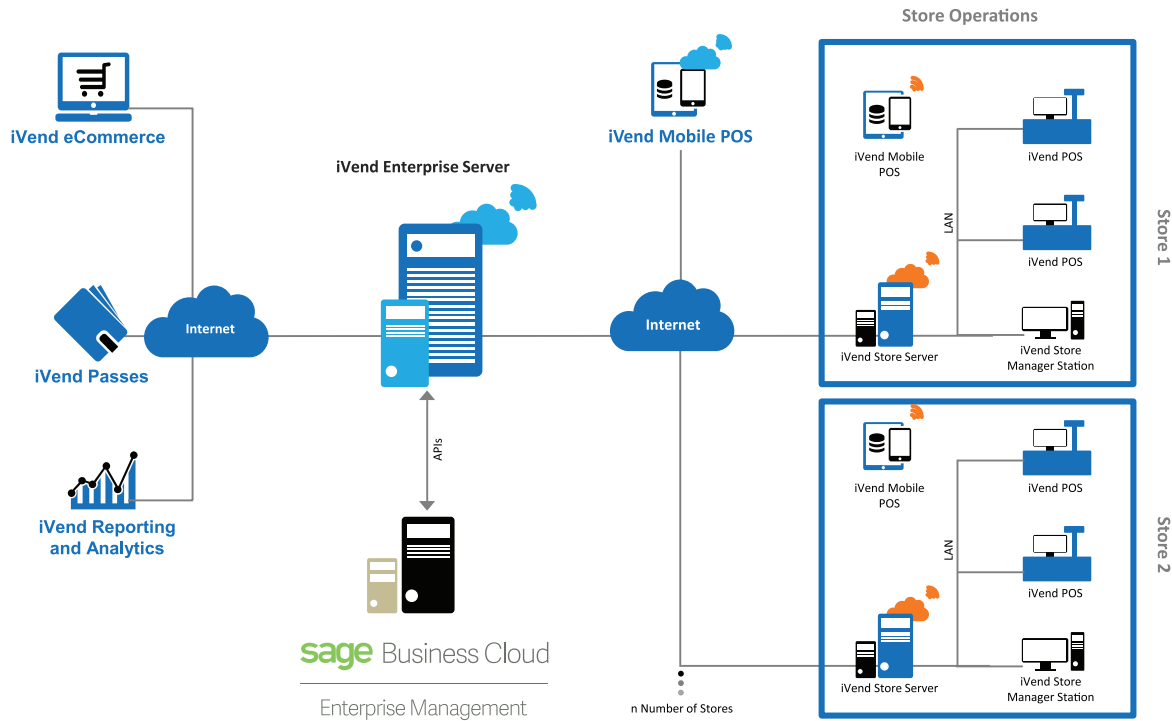


Simplify inventory management with a single stock pool across all sales channels allowing for more efficient stock reduction and improved stock turns

Sage Enterprise Management Integration

iVend Retail and Sage Enterprise Management

Version: Sage Enterprise Management Update 11.0.8



Sage Enterprise Management Master Data Sync

Sage Enterprise Management to iVend Retail

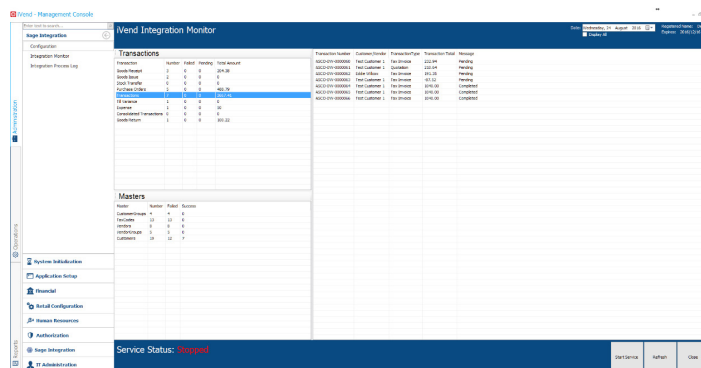
- | | | | |
|-------------------|-----------------|-------------------|---------------------|
| • Product | • Tax Codes | • Site Details | • Inventory Updates |
| • Product Group | • Currency | • Unit Of measure | • Serial Numbers |
| • Barcodes | • Sales Person | • Price Lists | • Lot Number |
| • Barcodes by UOM | • Payment Types | • Item Pricing | • Exchange Rates |
| • Customer | • Banks | • Vendor | • Locations |
| • Customer Group | • Sites | • Vendor Details | |

Sage Enterprise Management Integration

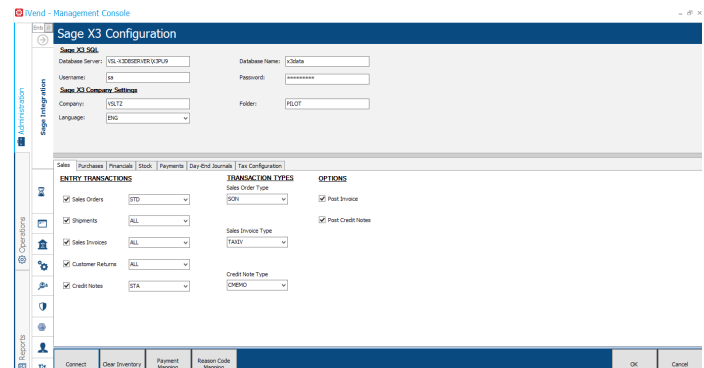
iVend Retail Transactional Integration

- Sales Invoices
- Sales Orders
- Lay-Aways
- Sales Refunds
- Account Payments
- Purchase Orders
- Goods Received
- Goods Returned
- Stock Adjustments +
- Stock Adjustments -
- Stock Counts
- Expenses
- Cash-up Variances
- Gift Cards
- Discounts
- Coupons
- Stock Transfer From
- Stock Transfer To
- Consolidated Invoices
- Credit Note/Invoice Matching

Sage Enterprise Management Integration Configuration



Sage Enterprise Management Integration Monitor



The integration configuration found within iVend Retail for Sage Enterprise Management enables administrators to manage the integration entry type and map Payment Types and Cash-up Variances to Sage Enterprise Management General Ledger accounts and banks. These mappings ensure that correct financial entries are posted without any manual intervention.

The integration monitor provides a consolidated, real-time overview of transactional and master data integrations between iVend Retail and Sage Enterprise Management. The integration monitor intuitively presents failed, pending and successfully integrated transactions.